

Expanding Bi/Multilingual Teacher Pathways in Georgia through Kennesaw State University's TESOL Programs

Drs. Jayoung Choi, Tuba Angay Crowder, & Zurisaray Espinosa

Kennesaw State University
Virtual Information Session
December 21, 2024 10AM



KENNESAW STATE
UNIVERSITY

Agenda



The NPD supported KSU TESOL program: Expanding Bi/ Multilingual Teacher Pathways in Georgia through Kennesaw State University's TESOL Programs



KSU TESOL programs



FAQs



Q&A





**Drs. Jayoung Choi, Tuba Angay-Crowder, and
Zurisaray Espinosa on being awarded a
\$2,539,387 grant from the U.S. Department of
Education's Office of English Language
Acquisition titled "Expanding Bi/Multilingual
Teacher Pathways in Georgia through Kennesaw
State University's TESOL Programs."**



DO YOU SPEAK A LANGUAGE OTHER THAN ENGLISH?

You may qualify for FREE education in
TESOL at Kennesaw State University
through our grant-sponsored program,
***Expanding Bi/Multilingual
Teacher Pathways in Georgia!***

WHY JOIN?

- Earn a master's teaching degree, TESOL Certification, ESOL Endorsement/Certificate, or university course credits at no cost to you
- Join a professional community focused on TESOL, multilingual education, and cultural



**WHICH PROGRAM TO
CHOOSE?**

The OELA NPD Grant

<https://bagwell.kennesaw.edu/research/bi-multilingual-pathway/team.php>



OELA NPD GRANT TEAM



Dr. Jayoung Choi

Project
Director &
Principle
Investigator



Dr. Tuba Angay
Crowder

Project Manager
and Co-Investigator &
Coordinator of the NPD
sponsored MAT TESOL



Dr. Zurisaray Espinosa

Co-Investigator &
Coordinator of the NPD
sponsored ESOL
Endorsement



The OELA NPD Grant

The [National Professional Development \(NPD\) Program Grant](#), May 13 2024, total awarded \$2,539,387 for a five-year long project. Administered by the U.S. Department of Education's [Office of English Language Acquisition \(OELA\)](#)

Project Director and Principle Investigator: Dr. Jayoung Choi

Project Manager and Co-Investigator: Dr. Tuba Angay-Crowder

Co-Investigator: Dr. Zurisaray Espinosa

Project Title: Expanding Bi/Multilingual Teacher Pathways in Georgia through Kennesaw State University's TESOL Programs



The Purpose

- Increase the number of and, support for ESOL teachers, particularly Bi/Multilingual Teacher Candidates (BTCs) in GA.
- Address the challenge of cultivating and retaining more ESOL teachers and leaders in local GA school districts and fostering multilingualism in all K-12 students
- Highlight the demand for nurturing more bi/multilingual individuals to become ESOL certified teachers



The Plan

- Over the next five years, we plan to enroll, support, and retain a total of 120 BTCs in Kennesaw State University's (KSU) Teaching English to Speakers of Other Languages (TESOL) professional development (PD) programs through several Grow Your Own (GYO) pathways, such as:
 - 1. KSU's award-winning TESOL Master of Arts in Teaching (MAT) program that leads to initial teaching licensure in P-12 ESOL (through 4 cohorts, each cohort of 20)
 - 2. Undergraduate-level ESOL Endorsement for KSU teacher education majors (through 4 cohorts, each cohort of 10)



Grow Your Own Pathways # 1

- MAT TESOL leading to initial teacher licensure I
ESOL P-12 (12 courses)
 - KSU seniors in undergraduate programs
 - Paraprofessionals and substitute teachers with bachelor's degrees
 - Others in the local community (including caregivers and Native American multilinguals)



Grow Your Own Pathways # 2

- Undergraduate-level TESOL non-degree Programs (ESOL Endorsement)(3 courses)
 - KSU undergraduate students in Pre-Service programs



Our Three Major Goals

- Goal 1 – **Recruit & enroll** Bilingual or Multilingual individuals into KSU's GYO TESOL pathway programs.
- The goal's objective:
 - A total of 120 BTCs will be recruited and enrolled in PD programs to be fully licensed, certified, endorsed, or receive credits in TESOL education.



Our Three Major Goals

- Goal 2 – **Support & prepare** Bilingual or Multilingual individuals to become high-quality credentialed teachers in ESOL in GA
- The goal's objective:
 - A total of 120 BTCs will participate in PD programs to earn early ESOL credits towards their GYO pathway programs.
 - BTCs will utilize ongoing academic, social, and financial support.



Our Three Major Goals

- Goal 3 – **Retain** Bilingual or Multilingual individuals in KSU's GYO TESOL pathways, leading them to program completion.



NEXT STEPS & Timeline

1. Bilingual proficiency document
2. Participate in an information session
3. Review and sign e-consent form (Jan. 2025)
4. Participant in a group/individual interview (Jan. 2025)
5. Review and sign MOU/Contract (Jan. 2025)
6. Complete a survey (Jan. 2025)
7. Apply through the KSU application system (Feb. 2025)
8. Wait for a decision from us (Feb. 2025)
9. Sign up for courses (we will pay for the courses and KSU fees) (end of Feb. or beginning of March 2025)
10. Participate in a hybrid orientation (end of April or first week of May 2025)
11. Start summer courses (end of May/ first week of June 2025)



Bilingual proficiency- English Proficiency Requirements

If you meet one of the following criteria, no additional documentation is required to demonstrate English proficiency:

- **Completion of Full-Time Study:**
 - You have completed at least two years of full-time study at a recognized college or university where English is the primary language of instruction, with a minimum GPA of 3.0.
 - *Required Documentation:* Official transcripts and confirmation of English as the medium of instruction.
- **Completion of Intensive English Programs:**
 - You have completed the highest level of intensive English study at Georgia Institute of Technology or Level 6 of the Intensive English Program at Kennesaw State University.
 - *Required Documentation:* Official transcripts from the English Language Institute.
- **Employment and Residency in the U.S.:**
 - You have resided in the U.S. for five years and been employed in establishments where all activities are conducted in English.
 - *Required Documentation:* A letter from the HR department (or an authorized official) certifying that all activities are conducted in English and specifying employment dates.



Bilingual proficiency- Heritage Language Proficiency Requirements

To demonstrate proficiency in your heritage language, please submit the following:

- **Official Transcript:**
 - ♦ A transcript of your bachelor's degree from a U.S. institution or an international university outside the U.S.
- **Seal of Biliteracy Certificate (if applicable):**
 - ♦ Provide a copy if you have earned this certificate.
- **Language Proficiency Test Results (if applicable):**
 - ♦ ACTFL or STAMP test scores.
- **Additional Evidence of Language Competency:**
 - ♦ Submit any other relevant documents demonstrating your heritage language proficiency, such as certified interpreter credentials or GACE test results.
- **Credential Evaluation Report (if applicable):**
 - ♦ If your degree is from a non-US institution and currently not recognized as equivalent to a U.S. degree, submit your transcripts to a U.S. credential evaluation agency for an equivalency report. Alternatively, have your transcripts evaluated through KSU. Learn more [here](#).



Additional requirements:

- A bachelor's degree is required for admission to the master's program.
- If you attended an international institution outside the U.S., please specify the medium of instruction used at your university or educational institution.
- If you are currently employed in a K-12 school and plan to continue working there, your school must approve your participation and provide the necessary space for you to complete the ESOL field experiences (practicum) required for our degree and certification program. Specifically:
 - You will complete two semesters of practicum (student teaching) in an ESOL classroom during your final two semesters of study.
 - This will require collaboration with your school's leadership to facilitate these arrangements. We recommend discussing this with your school administration before proceeding further.



Additional requirements and NOTES:

You will sign a Memorandum of Understanding (MOU) that can help us determine your commitment in the project.

If you are not selected for the first year, you can apply for the next year. (We will have a total of 4 cohorts over the next four years)



KSU TESOL Programs

- Kennesaw State University's (KSU) Teaching English to Speakers of Other Languages (TESOL) professional development (PD) programs have tried to meet the identified needs in the state through several Grow Your Own (GYO) pathways:
 - (1) KSU's award-winning [TESOL Master of Arts in Teaching \(MAT\)](#) program that leads to initial teaching licensure in P-12 ESOL (36 credit hours)
 - (2) [Master's in Education \(M.Ed.\) in ESOL](#) (30 credit hours)
 - (3) [ESOL Endorsement](#) (9 credit hours)
 - (4) [Teaching English in Global/Local Contexts Certificate](#) program (9 credit hours)



TESOL Faculty at KSU

- ♦ Dr. Jayoung Choi (Program Coordinator)
- ♦ Dr. Amanda Richey
- ♦ Dr. Nihal Khote
- ♦ Dr. Zurisaray Espinosa (Clinical Assistant Professor of TESOL)
- ♦ Part-time faculty:
 - ♦ Dr. Jihye Shin
 - ♦ Dr. Anna Sargent
 - ♦ Dr. Marguerite Gimenez
- ♦ <https://bagwell.kennesaw.edu/departments/ined/ined-faculty.php>
- ♦ [Meet KSUs TESOL Faculty - Research Highlights.mp4](#)



MEET OUR TESOL TEAM

Inclusive Education

Bagwell College of Education



Dr. Jayoung Choi

Professor;
TESOL MAT
and MED
Programs
Coordinator



Dr. Nihal Khote

Associate
Professor;
ESOL
Endorsement
Program
Coordinator



Dr. Amanda Richey

Professor
EDUC 2120
Course
Coordinator;
Coordinator
for Education
Minor



Dr. Zurisaray
Espinosa

Clinical Assistant
Professor



MEET OUR TESOL TEAM cont.

Inclusive Education

Bagwell College of Education



Dr. Jihye Shin

Part-time Instructor
of TESOL at KSU



**Dr. Rita
Gimenez**

Part-time
Instructor of
TESOL at KSU



Dr. Anna Sargent

Part-time Instructor
of TESOL at KSU;
Director of Federal
Programs; Title III &
Migrant at Hall
County Schools



INED Department



- ◆ Dr. Denise Ross, Department Chair
 - ◆ Position: Department Chair of Inclusive Education & Professor of Special Education
 - ◆ Phone: (470) 578-4736
 - ◆ Email: dross71@kennesaw.edu
 - ◆ Location: BEB 443

Jennifer Scanling, Interim Office Manager

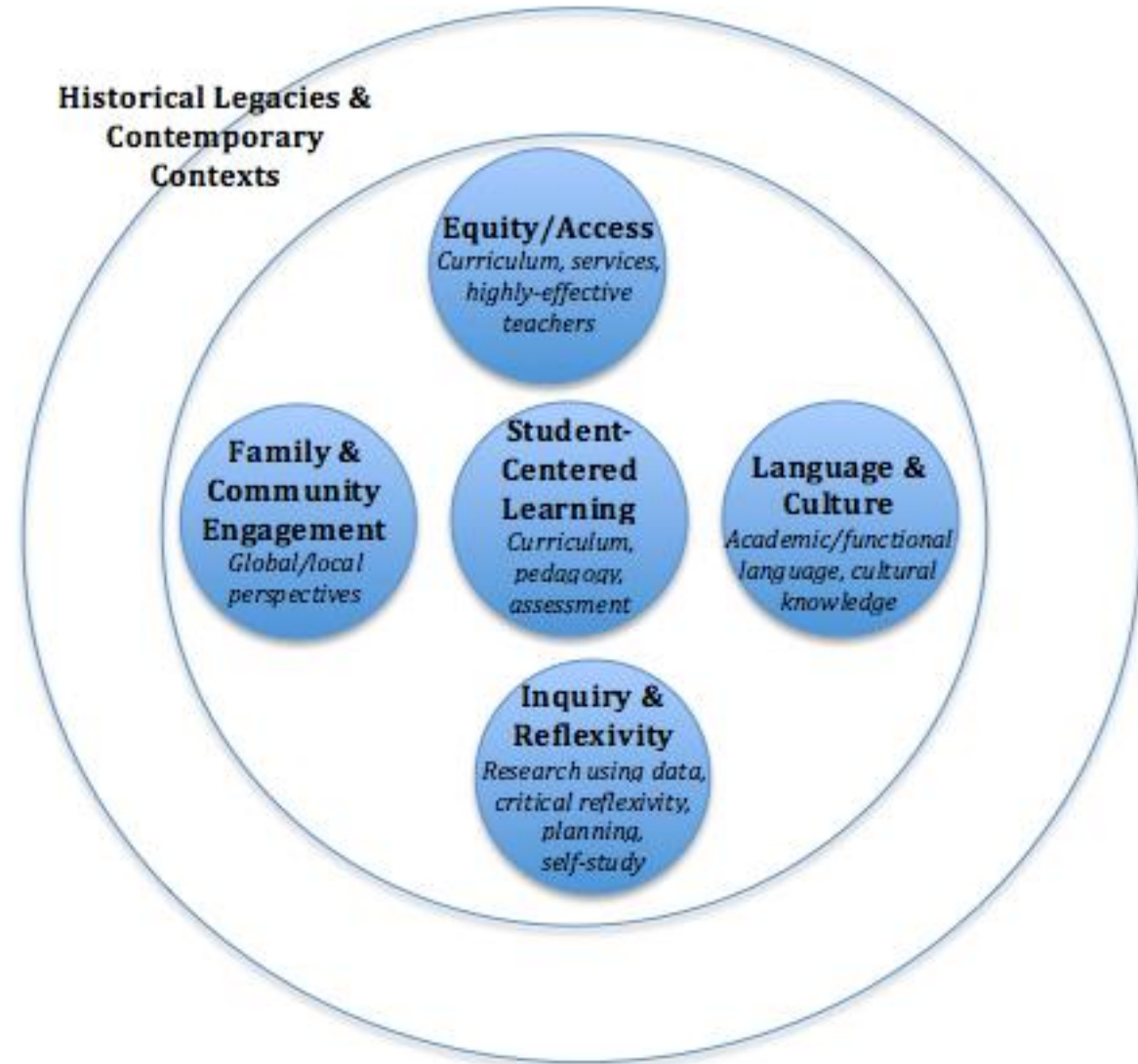


- **Position: Office Manager**
- **Phone: 470-578-6577**
- **Email: jscanlin@kennesaw.edu**
- **Location: BEB 419**



TESOL Program Overview

- ♦ Our program and courses are built on the foundation of our Conceptual Framework, which addresses the following areas:



- Our programs and courses are designed around outcomes that are based upon the TESOL/Interstate Teacher Assessment and Support Consortium (InTASC) Standards for P-12 Teacher Education Programs
- For teacher candidates: *TESOL P-12 Professional Teaching Standards*
- *https://www.tesol.org/media/fuwijiu4/bk_prek-12elpstandards_framework_318.pdf*
- Candidates meeting these standards are equipped to provide effective and equitable education for ESOL students.
- For English learners & their teachers:
 - *WIDA English Language Development Standards* (aligned with TESOL PreK-12 English Language Proficiency Standards)
 - These standards guide teachers in students' development of English language proficiency.



Plan of Study TESOL M.A.T

EFFECTIVE FALL 2024

Summer 2025

- INED 7781: Cultural Issues for ESOL Teachers (3) - 6wks
- EDUC 6240: Psychological Foundations of Education (3) - 8wks

Fall 2025

- INED 7782: Applied Linguistics for ESOL Teachers (3)
- INED 7783: Methods & Materials for Teaching ESOL (3)

Spring 2026

- INED 7779: Collaborative Practices with Families, Schools & Communities (3)
- INED 7787: Content Area Reading and Writing for English Learners (3)

Summer 2026

- INED 7750: Language, Power and Pedagogy (3)
- INED 7763: Curriculum Development for Culturally & Linguistically Diverse Learners (3)

Fall 2026

- EDUC 6610: Introduction to Yearlong Clinical Experience (0 credits)
- INED 6650: TESOL Yearlong Clinical Experience I (3)
- INED 6400: Effectively Supporting Students with Exceptionalities in Inclusive Settings (3)

Spring 2027

- INED 6660: TESOL Yearlong Clinical Experience II (F2F) (6)



Plan of Study TESOL M.A.T. (Expedited)

EFFECTIVE FALL 2024

Summer 2025

- INED 7781: Cultural Issues for ESOL Teachers (3) - 6wks
- EDUC 6240: Psychological Foundations of Education (3) - 8wks

Fall 2025

- INED 7782: Applied Linguistics for ESOL Teachers (3)
- INED 7783: Methods & Materials for Teaching ESOL (3)
- EDUC 6610: Introduction to Yearlong Clinical Experience (0 credits and different schedule!!)
- INED 6650: TESOL Yearlong Clinical Experience I (3)
- INED 6400: Effectively Supporting Students with Exceptionalities in Inclusive Settings (3)

Spring 2026

- INED 7779: Collaborative Practices with Families, Schools & Communities (3)
- INED 7787: Content Area Reading and Writing for English Learners (3)
- INED 6660: TESOL Yearlong Clinical Experience II (F2F) (6)

Summer 2026

- INED 7750: Language, Power and Pedagogy (3)
- INED 7763: Curriculum Development for Culturally & Linguistically Diverse Learners (3)



Critical Dates for SU 2025

- Summer Registration will start March 14, and drop/add will end on June 3rd so please make sure to register before this date. INED Summer courses begin June 3rd and are 6 weeks long (June 3rd-July 10th).
- Final exams will take place online from July 14th - 15th.
- 8 week courses start May 28th.
- <https://www.kennesaw.edu/registrar/academic-calendars/academic-calendar-summer-2025.php>

More Information pertaining to MAT TESOL program



Pre-service certification (MAT TESOL)

- Our field placement office cannot seek your placement until you have an issued pre-service so the longer it takes could delay a Fall placement with the schools closing for the summer. Central offices remain open but teachers are off and obtaining acceptance of a student into a placement is increasingly difficult.
- Still need to actually apply for the pre-service through your MyPSC account. The Verification of Lawful Presence must be printed and signed in front of a notary. We have one available in the Dean's Suite on T, W and F. The KSU Registrar also has notaries on staff free of charge.
- Once you apply for the pre-service, through your MyPSC account, you will be prompted to upload the notarized Verification and a copy of your driver's license.
- Unless the pre-service certificate is completed, you may have a hold on your account.



Further clarification about the Certificate (MAT TESOL)

- P-12 certification
- With the ESOL certification in PreK-12, you cannot be hired as an elementary school teacher. You can work as an ESOL teacher at any grade level, though.
- It is always good to take GACE exam(s) in other content areas to increase your marketability.



YCE Expectations (MAT TESOL)

- The PSC has K-2, 3-5, 6-8, and 9-12.
- The YCE hour breakdown is YCE I 225 hours and YCE II 400 hours.
- Teacher candidates need placements in the other 2 grade bands.
- This is the breakdown hours in each grade band that the student is not placed in:
 - K-5 – 4 hours
 - 6-8 – 4 hours
 - 9-12 – 4 hours
- When enrolled in INED 7783, TESOL Practicum, try to meet one grade cluster outside your current grade band.

Field Placements (MAT TESOL)

- Clinical Experiences, Placements and Partnerships (CEPP)
<https://bagwell.kennesaw.edu/units/cepp/index.php>
- If you are a classroom teacher, you need to work with your principal/HR to arrange your teaching English learners during the Yearlong Courses.
- A staff member at CEPP places YCE and B-K students.

GACE (MAT TESOL)

- GaPSC and Student Teaching (for MAT students).
- Pass GACE Ethics exam (test code 360) before graduation
- Attempt GACE ESOL Exam I and II before graduation (You only have to pass the areas you are not required to score at a professional level)

Initial Certification (MAT TESOL)

<https://bagwell.kennesaw.edu/policies/teacher-certification.php>



Quick tour?

D2L

<https://d2l.kennesaw.edu/>





KSU D2L BRIGHTSPACE

MyKSU A-Z Index Directories Campus Maps
Apply Visit Give

KSU Search SEARCH

About KSU Academics Admissions Athletics Campus Life Research Global



D2L Brightspace Access

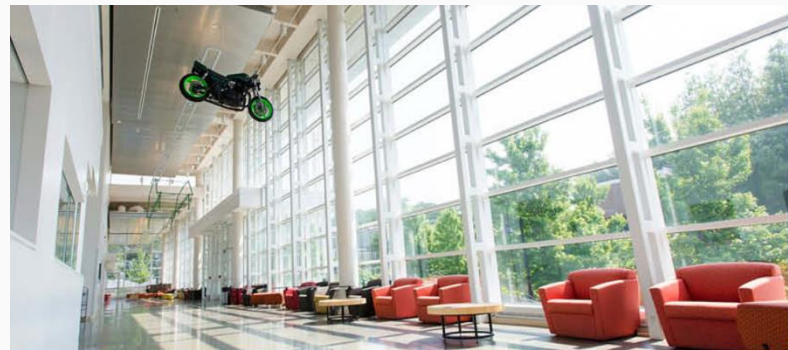
LOGIN TO KSU D2L BRIGHTSPACE

SYSTEM CHECK

D2L Brightspace requires Duo two-factor authentication. [{Duo help page}](#)

Please click here for a system check before you log in.

STUDENTS



Sign in with your organizational account

Sign in

Please use your primary E-mail address to login.

Students:

[Netid]@students.kennesaw.edu

Faculty/Staff: [NetID]@kennesaw.edu

GHC Students:

[NetID]@win.kennesaw.edu

To change or reset your password, please visit [NetID](#).

Announcements ▾

Stay Safe, Stay Well on Campus

Posted Jun 2, 2020 3:56 PM

As USG institutions plan for the return to face to face instruction in the fall, there is no higher priority than the health and safety of our students, faculty, and staff. We need everyone to do their part to keep our campus communities and visitors safe.



[Show All Announcements](#)

My Courses

< [Spring 2020](#) [Summer 2017](#) [Summer 2018](#) [Summer 2019](#) [Summer 2020](#)



Cultural Issues for
ESOL Teach Section
W03 Summer
Semester 2020 CO
CO.430.INED7781.508x
• Summer 2020

[View All Courses \(1\)](#)

Campus Bookmarks

- [KSU Library](#)
- [Students within two weeks of the end of their course can click here to complete a course evaluation.](#)
- [Thank-a-Teacher](#)
- [Academic Calendar](#)
- [Computer Usage Policy](#)
- [Academic Integrity](#)

KSU Library Search ▾

SuperSearch **Books**
Search for books, articles,
images, & more:

Keywo ▾

Search

Limit Your Results:
 Full-Text Scholarly

KSU D2L Help for Faculty

KSU Help Resources for Faculty and Staff

- [UITS D2L Brightspace training materials](#)
- [UITS D2L Brightspace Continuous Delivery updates](#)
- [Hands-on workshop schedule](#)
- Technical Assistance**
- Email: service@kennesaw.edu
- or call 470-578-6999
- .STU Account**
- [.stu login page](#)
- External Learning Tool**
- [Publisher Integration](#)



Calendar

Wednesday, March 24, 2021

Upcoming events

- MAR All Day
27 Module 7 Discussion post. Individual
- MAR All Day
29 Module 7 Discussion post. Group
- APR 6:00 PM
1 Meeting#6. April 1, Th. 6PM

Content Browser

Bookmarks Recently Visited

- Resources
- Syllabus & Course Calendar
- Class Meetings
- Module 1: Introduction, Review, WIDA, SIOP Intro & Getting Started

Announcements

Course updates March 10 2021

Posted Mar 10, 2021 6:26 PM

- I finished reviewing all your work turned in so far in the course- especially the two assignments that were due Feb. 22 (dispositions diary and SIOP video reflection). I plan to share some of my responses in the next class meeting on March 18, 6PM.
- More modules are published. Please note that we don't have a discussion post for module 6 during the week of March 15. Instead, we have a quiz.
- Meeting#5. March 18, Th. 6PM:

- Resources 6
- Syllabus & Course Calendar 2
- Class Meetings 15
- Module 1: Introduction, Review, WIDA, SIOP Intro & Getting Started 4
- Module 2 -- Lesson Planning 26
- Module 3 Building Background 6
- Module 4 Comprehensible Input 4
- Module 5 Lesson Delivery: Culturally & Linguistically 4

Upload / Create

- Module 1: Introduction, F Link
- Module 1: Check for Und Quiz Due January 18 at 11:59 PM
- After reading chapter 1 ir questions. You can atten
- COPY of Ch1.SIOP BOOI PDF document
- Intro Discussion Topic

Add a sub-module...

FAQs from Candidates: Program-Related

- Which pathway should I join if I already have an ESOL endorsement?
 - MAT TESOL
- Will I graduate with certification in both ESOL and regular subject areas?
 - You will be certified in ESOL P-12. You could pass GACE in other subject areas to teach them in GA.
- When is the earliest I can apply for the program?
 - Applications are available now till May 1, 2025. However, please wait for us to make a decision first.

FAQs from Candidates: Program-Related

- Which pathway qualifies me to become an ESOL teacher?
 - Both (all) pathways
- Is a degree required for any pathway?
 - Yes, bachelor's degree is required for MAT TESOL
- Is the program online, hybrid, or in-person? What is the format?
 - Online classes for MAT TESOL. We may hold in-person PD sessions for those who are available. Practicum will be in K-12 settings.
- Does the program provide a teaching certificate or only an endorsement?
 - MAT TESOL-initial teaching licensure

FAQs from Candidates: Program-Related

- Can I transfer credits, and how many?
 - Transfer credit cannot exceed 25% of the total semester hours required for the program. (i.e., 3 courses).
- Are courses offered online or face-to-face?
 - All courses are online
- Will this certification allow me to work for APS or other specific districts? Yes.
- Can field experiences be completed at my current school? Yes.
- What are the program's requirements for acceptance? Listed at the KSU website.
- Can I apply if I'm already in a TESOL program? Yes and no.

FAQs from Candidates: Proficiency and Documentation

- How do I prove proficiency without formal documentation?
- Where can I take a proficiency test, and what are the deadlines?
 - See our guidelines about bilingual proficiency
- Is a bachelor's degree or teaching diploma from another country valid proof of bilingualism?
 - Yes, if language of instruction is in another language. Valid for heritage language proficiency requirement

FAQs from Candidates: Proficiency and Documentation

- Do I need to provide documentation for English proficiency in addition to my native language?
 - Yes. Please see KSU admissions guidelines.
- Is previous coursework or testing sufficient for proficiency verification?
 - Yes - note that certain level proficiency required in test results
- Where should proficiency documents be sent?
 - Send them to Dr. Crowder
- Should transcripts already evaluated be submitted again?
 - KSU requires official transcript

FAQs from Candidates: Funding and Certification

- Am I eligible for program funding, and how do I apply?
 - You are eligible for free tuition and fee. Additional funding may be available if you are low income.
- Does the program include gifted endorsement?
 - No, but our department has a gifted endorsement program.
- How many classes are required for the program?
 - 36 credit hours, 11 courses
- Will my bilingual background reduce the required coursework?
 - No

Q & A???

Thank you!

Teşekkürler!

Muğumesc!
감사합니다!

متشكرم

مرسى

شكرًا لك

Multilingualteachers@kennesaw.edu

Dr. Jayoung Choi
jchoi44@kennesaw.edu

Dr. Tuba-Angay Crowder
tangaycr@kennesaw.edu

Dr. Zurisary Espinosa
zespinos@kennesaw.edu



**KENNESAW STATE
UNIVERSITY**
BAGWELL COLLEGE OF EDUCATION